

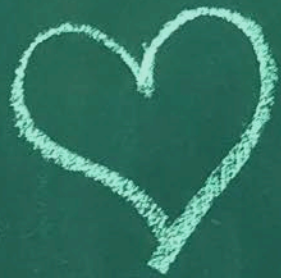
#ArtHouse

#LOVE

your
BLOCK

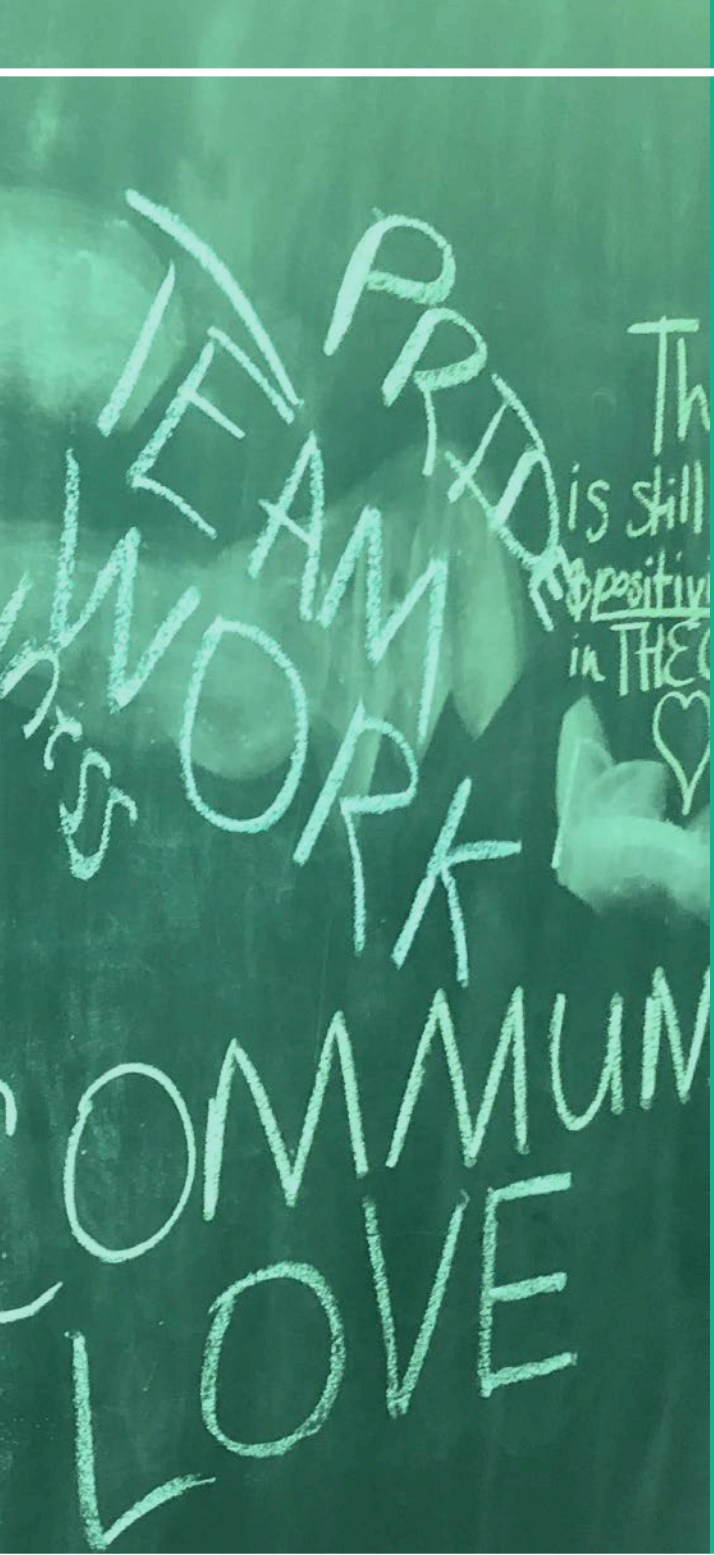
GROWN
LEGENDARY

Build
3R



Handwritten scribbles and text in white chalk, including the word "Build" and other illegible characters.

Handwritten text in white chalk, including the word "Block" and other illegible characters.



chapter 3

guiding principles

Through community visioning and input from the Community Advisory Committee and the City Team, the Comprehensive Plan articulates a series of guiding principles. The principles connect the overarching themes with the plan's Land Use, Transportation, and Green Infrastructure Plans. These principles reflect the priorities of residents as articulated through public engagement and previous planning work and establish a reference point for community members and decision makers as policies are developed and projects are reviewed.



1. Grow Gary's Population.

A growing city reflects a healthy economy, vibrant community, and high quality of life. Planning decisions, land use policies, and regulations will encourage and foster population growth.



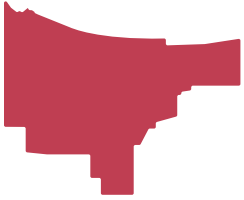
2. Increase the City's Tax Base.

Years of disinvestment and population loss have decimated city services and left residents to deal with blight and deterioration. In order to restore a level of service and quality of life befitting of Gary, economic development and land use policies will encourage investment and the associated increases in Gary's assessed valuation to increase tax revenue.



3. Build Generational Wealth.

As Gary's population decreased, many of its wealthier and talented residents left. An entire generation of Garyites built their lives on the promise of the steel industry, only to have global economic forces undermine that promise. The city will foster wealth building from within through education, knowledge exchanges, supporting talent, and creating opportunities that build on Gary's existing community without displacing it.



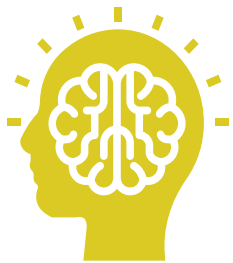
4. Gary Defines Gary.

Gary has a talented community, boundless opportunities, natural beauty, and momentum. Decision makers, volunteers, and citizens must act as advocates for our city. Too often, outside (often misinformed) perceptions infiltrate our own opinions of Gary.



5. Improve Connectivity and Information Sharing.

Universally, there is good work going on in each neighborhood of the city. Our local government, business owners, and neighbors must focus on collective action through better communication. The City will play a key role in facilitating collaboration and sharing opportunities and information.



6. Keep an Open Mind.

As we move into our next phase of evolution and rebuild Gary for the future, residents must be open to new possibilities, many of which we cannot predict today. By looking forward and embracing change, we will rebuild our city into something beautiful that serves the next generation.